

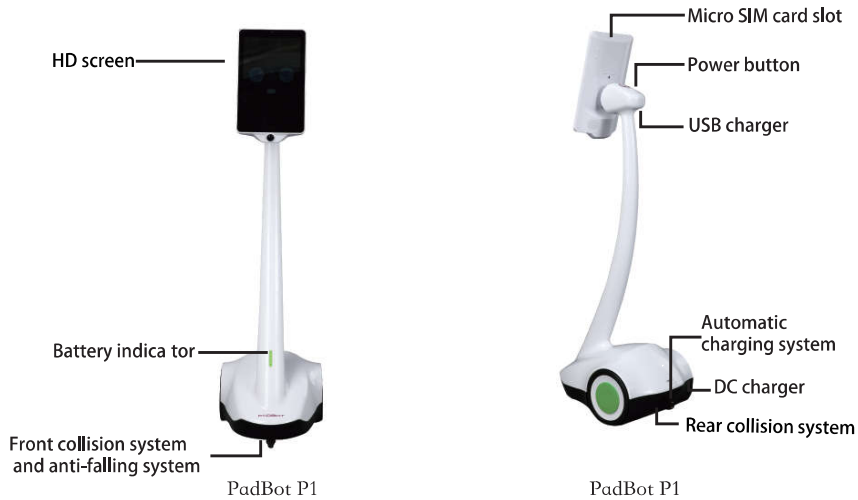


PADBOT

User Guide

PadBot P1

1 Overview



PS: You can charge your tablet which on fixture with PadBot USB charger and your cable.

List of accessories



1 × AC/DC Adapter



1 × Charging Base

2 Head Installation Steps



(1)



(2)



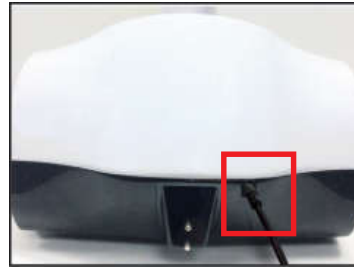
(3)

WiFi or 4G Network

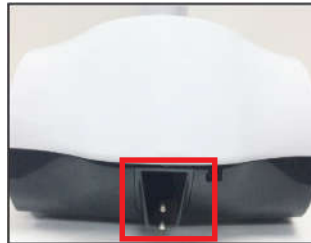
- WiFi network: it is recommended 8M bandwidth above.
- 4G Network : it is available to use the 4G.Please find the card slot on the top of the robot head.Use your fingernail to pull the cover out.

3 Battery Charging

1st way: Plug the power cable into the DC charge of the robot and then plug the power adapter into the electrical outlet.



2st way: Plug the power cable into the DC charge of the charging base and then plug the power adapter into the electrical outlet. After setting robot self charging, the robot will find the charging base automatically. After charging, robot will leave charging base automatically.



4 Using PadBot Apps (For example, we have one PadBot P2 and Phone B)

1. (Phone B) Install PadBot Apps: Download the "PadBot" in Phone B.



Plan to make video chat



iPad



iPhone



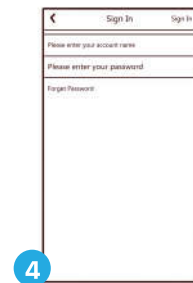
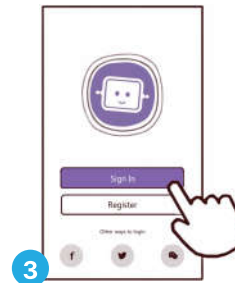
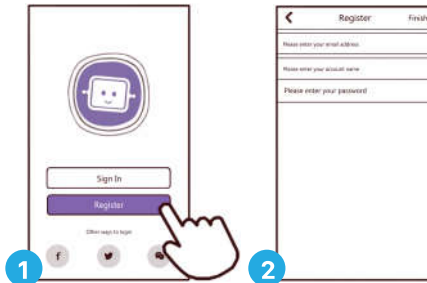
Android Pad



Android Phone

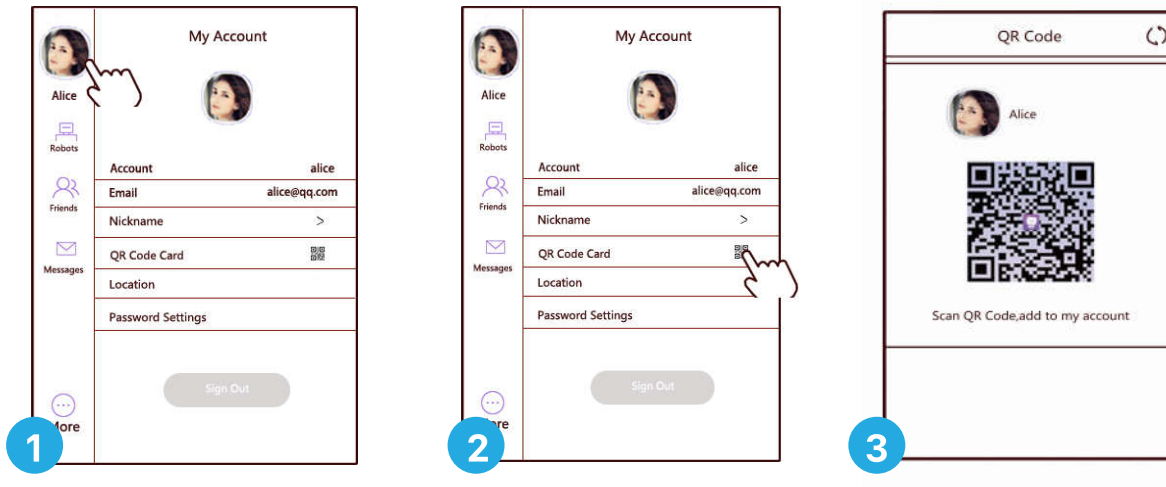
2. (PadBot P2 and Phone B) Register account:

Open PadBot Apps, registered users enter the account and password, and login your account.



3. (PadBot P2) Open the QR Code:

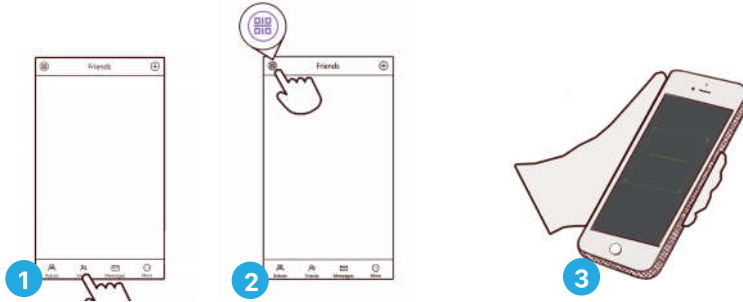
Click the avatar icon in the left menu to enter "My Account" page. , click the "QR Code Card" to show the QR Code.



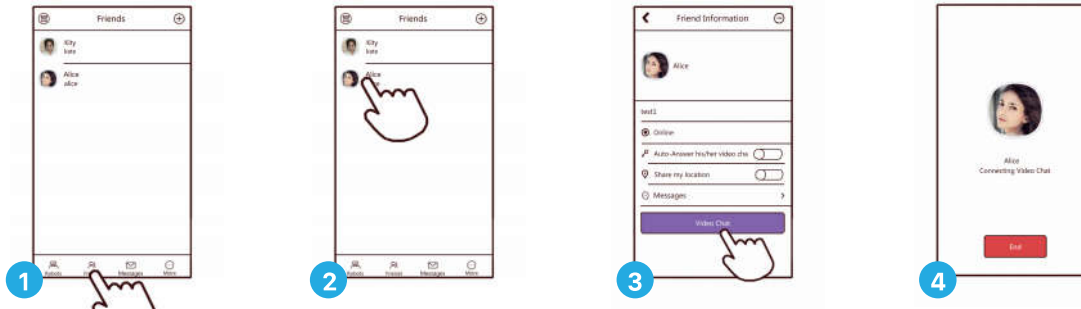
5 Video Chat

4. (Phone B) Add friend - Scanning QR Code:

From the "Friend" menu, click the "QR Code Scan" icon to scan the QR Code of Pad A.

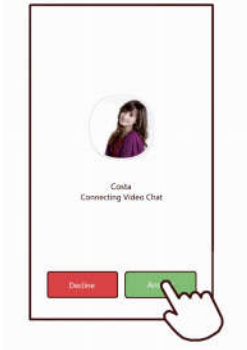


5. (Phone B) Building a video chat: From the "Friend" menu, you can click friend's avatar icon, and click the "Video Chat" button to build a video chat with your friend.



6 Control the Robot

6. (PadBot P2) You can accept or refuse the friend's video chat.



7. (Phone B) Control the robot: Control the robot to move forward, backward, turn left, turn right.



A Moving forward or backward



Initial position



Moving forward



Moving backward

B Turn left or turn right



Initial position



Turn right



Turn left

8 Technical Specifications

Height: 100cm

Width: 26.6cm

Depth: 37.2cm

Battery Capacity: 5000mAh

Rated Energy: 55.5Wh

Charging Input: 12.6V/1.5A

Charge Time: 6 Hours

Standby Time: 40 Hours

9 Use and Handling

1. Do not place robot in humidity, dusty, smoggy or vapor environment.
2. Do not place robot in the water, and you can clean it with damp cloth and mild detergent.
3. Do not disassemble the robot.
4. Do not throw or drop robot, and don't cause violent shaking or shock to robot.
5. Please note that use wrong type battery will cause an explosion risk, be sure to follow the instruction to dispose of used batteries.



Inbot Technology Ltd.

Address: Room 1221-1222, Huagang Commercial Building, no.140,
West Zhongshan Ave, Tianhe-District, Guangzhou, China

E-mail: padbot@inbot.cn

Website: www.padbot.com

Hotline: (+8620)3845-6676
